

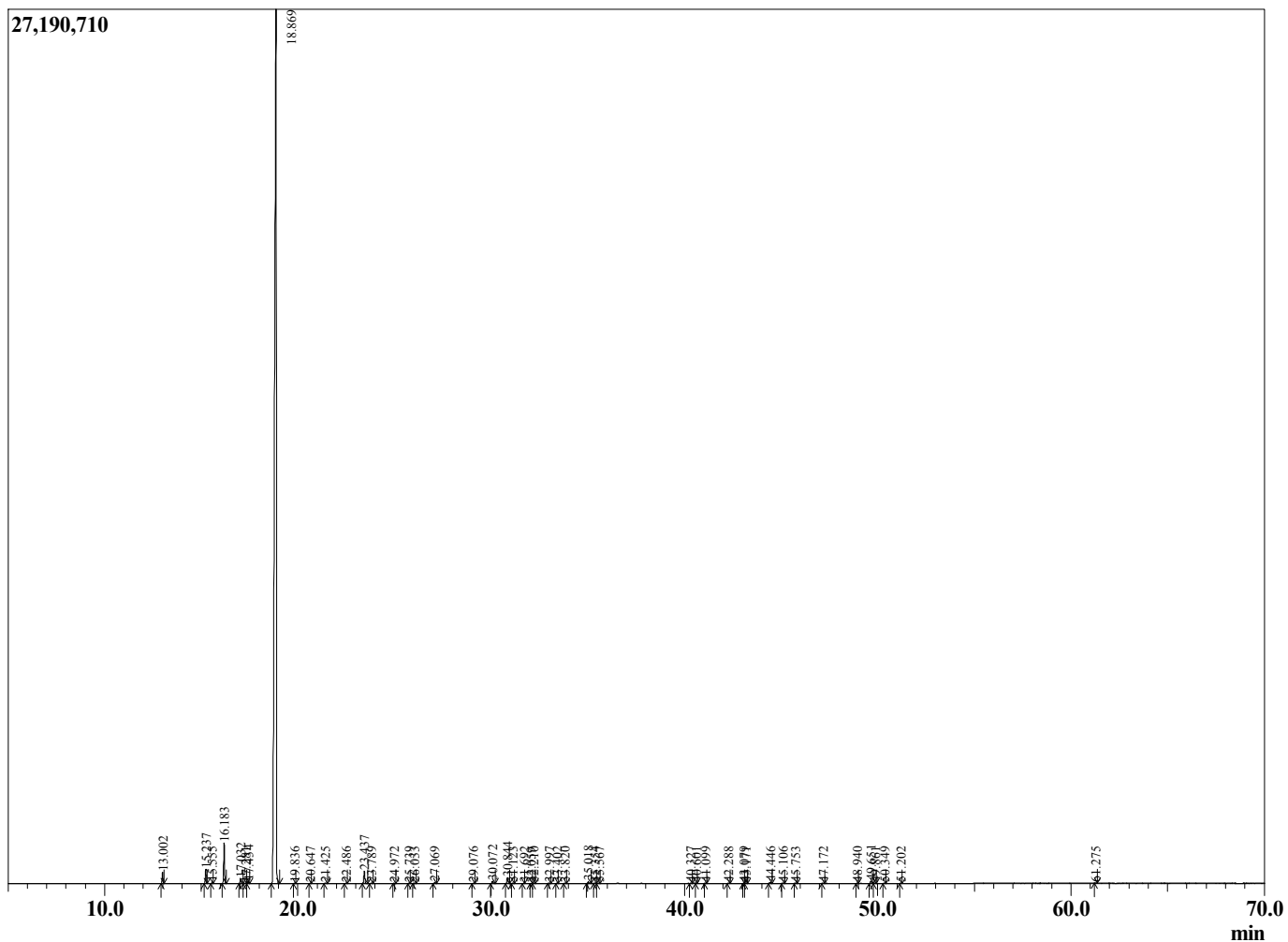
Sample Information

Test Date: : 8/26/2020 11:53:34 PM
 Sample Type : Essential Oil
 Sample Name : Citrus sinensis
 Injection : 0.10
 Volume

Orange Blood
 Lot# ITZ11-ZT
 Country: Italy



Chromatogram Citrus sinensis



R.Time	Name	Area%
13.002	alpha-Pinene	0.58
15.237	Sabinene	0.76
15.555	beta-Pinene	0.05
16.183	Myrcene	2.15
17.032	Octanal	0.27
17.281	alpha-Phellandrene	0.04
17.434	delta-3-Carene	0.14
18.869	Limonene	93.27
19.836	trans-beta-Ocimene	0.04
20.647	gamma-Terpinene	0.02
21.425	Octanol	0.05
22.486	Terpinolene	0.04
23.437	Linalool	0.78
23.789	Nonanal	0.05
24.972	trans-para-Mentha-2,8-dienol	0.02
25.739	cis-Limonene oxide	0.02
26.033	trans-Limonene oxide	0.05
27.069	Citronellal	0.06
29.076	Terpinen-4-ol	0.02
30.072	alpha-Terpineol	0.18
30.844	Decanal	0.41
31.123	Octyl acetate	0.04
31.692	trans-Carveol	0.02
32.059	Nerol	0.01
32.210	Citronellol	0.05
32.997	Neral	0.05
33.402	Carvone	0.03
33.820	Geraniol	0.02
35.018	Geranial	0.11
35.354	Decanol	0.03
35.567	Perillaldehyde	0.03
40.327	alpha-Terpinyl acetate	0.03
40.601	Eugenol	0.01
41.099	Neryl acetate	0.02
42.288	alpha-Copaene	0.03
43.079	beta-Cubebene	0.02
43.171	beta-Elementene	0.03
44.446	Dodecanal	0.07
45.106	beta-Caryophyllene	0.04
45.753	beta-Copaene	0.04
47.172	trans-beta-Farnesene	0.02
48.940	Germacrene D	0.01
49.651	Valencene	0.18
49.861	Unidentified	0.02
50.349	(E,E)-alpha-Farnesene	0.02
51.202	delta-Cadinene	0.03
61.275	beta-Sinensal	0.02
		100.00